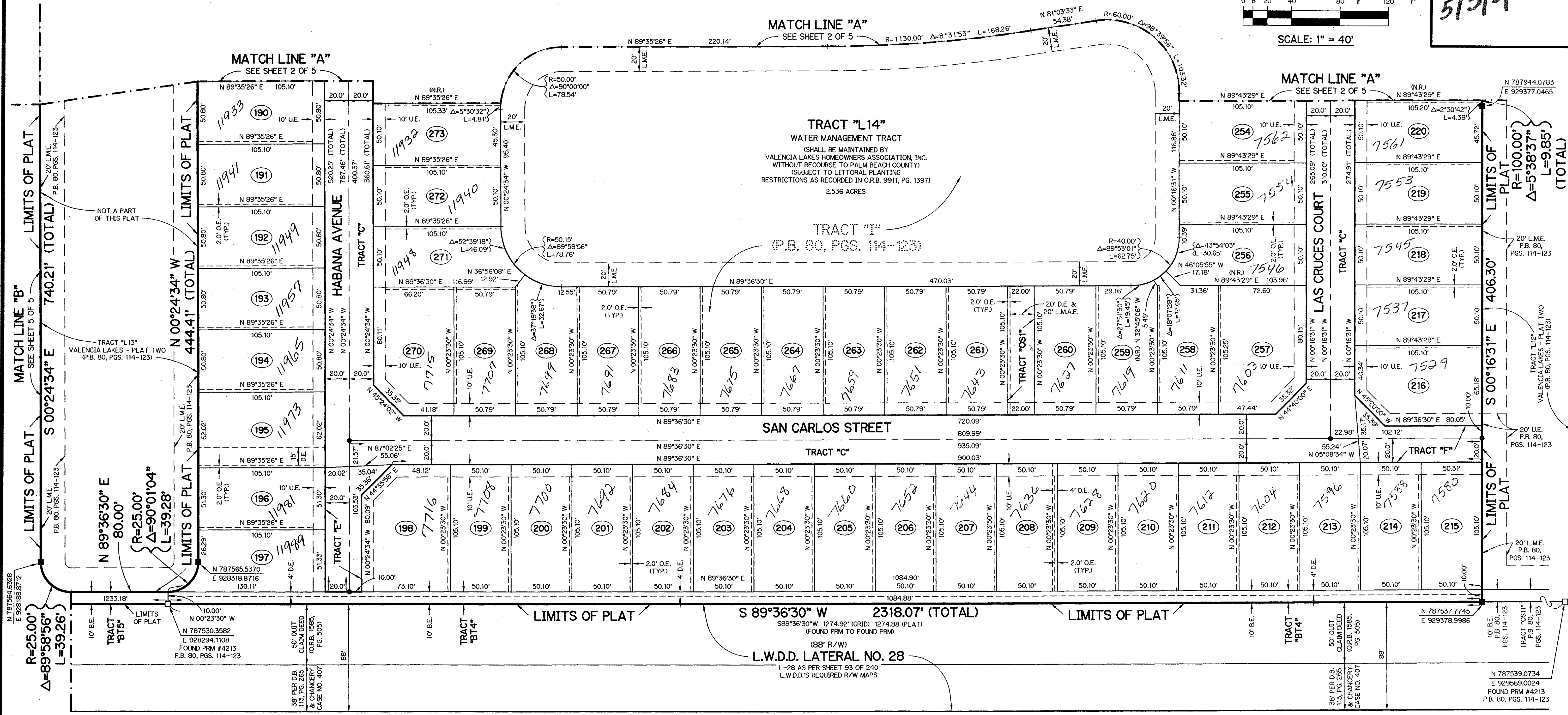
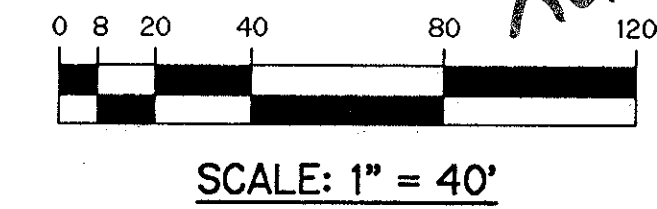


VALENCIA LAKES - PLAT THREE

BEING A REPLAT OF ALL OF TRACTS "I" AND "J" ACCORDING TO THE PLAT OF VALENCIA LAKES - PLAT TWO, AS RECORDED IN PLAT BOOK 80, PAGES 114 THROUGH 123, INCLUSIVE, OF THE PUBLIC RECORDS OF PALM BEACH COUNTY, FLORIDA. LYING IN SECTION 33, TOWNSHIP 45 SOUTH, RANGE 42 EAST.

SHEET 3 OF 5 JUNE, 1997

0662-004
111
 PET. 95-40
 NO SCHOOLS-RESTRICTIVE COVENANT
 ROADS- \$1320.00 PER UNIT
 5/31/97



- LEGEND:**
- - FOUND PERMANENT REFERENCE MONUMENT, PSM #4213
 - - SET PERMANENT REFERENCE MONUMENT, PSM #4213
 - - PERMANENT CONTROL POINT, PSM #4213
 - ∠ - DELTA ANGLE
 - B.E. - BUFFER EASEMENT
 - ⊕ - CENTERLINE
 - D.B. - DEED BOOK
 - D.E. - DRAINAGE EASEMENT
 - L - ARC LENGTH
 - L.A.E. - LIMITED ACCESS EASEMENT
 - L.M.A.E. - LAKE MAINTENANCE ACCESS EASEMENT
 - L.M.E. - LAKE MAINTENANCE EASEMENT
 - L.W.D.D. - LAKE WORTH DRAINAGE DISTRICT
 - N.R. - NOT RADIAL
 - N.T.S. - NOT TO SCALE
 - O.E. - OVERHANG EASEMENT
 - O.R.B. - OFFICIAL RECORD BOOK
 - P.B. - PLAT BOOK
 - P.S.S. - PAGES
 - P.S.M. - PROFESSIONAL SURVEYOR AND MAPPER
 - R - RADIUS
 - R/W - RIGHT-OF-WAY
 - S.T. - SURVEY TIE
 - U.E. - UTILITY EASEMENT
 - N 737648.0171 - DENOTES STATE PLANE COORDINATES
 - E 905258.2326

NOTE:
 COORDINATES SHOWN ARE GRID COORDINATES
 DATUM = NAD 83 (1990 ADJUSTMENT)
 ZONE = FLORIDA EAST ZONE
 LINEAR UNIT = U.S. SURVEY FEET
 COORDINATE SYSTEM 1983 STATE PLANE
 TRANSVERSE MERCATOR PROJECTION
 ALL DISTANCES ARE GROUND
 SCALE FACTOR = 1.00002688
 N 90°00'00" E (PLAT BEARING)
 N 90°00'00" E (GRID BEARING)
 NO BEARING ROTATION (PLAT = GRID)

THIS INSTRUMENT PREPARED BY
 PERRY C. WHITE, P.S.M. 4213, STATE OF FLORIDA
 LAWSON, NOBLE AND WEBB, INC.
 ENGINEERS PLANNERS SURVEYORS
 WEST PALM BEACH, FLORIDA

SUBDIVISION: Valencia Lakes
 BOOK: 81
 FLOOD MAP: 200A
 ZONING: FUD
 QUAD: 50
 SE: 95-40
 PUD NAME: Valencia Lakes

PET. 95-40
 PARCELS I+J

0662-004